

Louisiana Lagniappe



LOUISIANA STATE USBC WOMEN'S BOWLING ASSOCIATION

Volume 4, Issue 1

July 1, 2010

LOUISIANA STATE USBC WBA SHIRT DESIGN CONTEST

This is a reminder that the Louisiana State USBC WBA is holding a contest for a design for the state tournament shirts that are sold each year during state tournament. This contest is open to all current LA State USBC WBA members. LA State USBC WBA Board Members are not eligible to win. The winner of the contest will receive \$50.00 and their design will be used for the 2011 state tournament shirt.

Contest Rules are as follows:

1. The design must be limited to three colors, (Black & White are considered colors) and the design must not be larger 8" x 11" in size.
2. Nothing vulgar or suggestive will be accepted.
3. The design format should be in an electronic format if possible, but it is not required.
4. The design should contain a bowling theme. The 2011 championship tournament will be in Lafayette.
5. Each design that is submitted will be issued a number by the Ways & Means Chair. The name of the designer will not be announced until after the winning design is selected.
6. All designs will be returned to the person that submitted it.
7. All decisions concerning the vote for the winning design are final. There will be no changes after the decision has been made.
8. Deadline to submit design(s) is September 15, 2010.



Email or mail designs to:

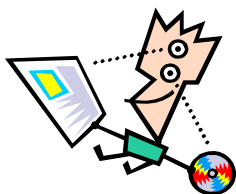
Cindy Pate, Chair
Ways & Means Committee
134 Eucharist Dr.
Lafayette, LA 70507

Email: cdrpate@cox.net

Contest winner receives \$50.00

NEWSLETTER INFORMATION

Do you have any information you want to include in the newsletter? If so, please email it to: LWBASusie@msn.com. Or you can mail information to the Louisiana USBC WBA office at: 10643 Ranchwood Drive, Baton Rouge, LA 70815



Inside this issue:

2010 CHAMPIONSHIP TOURNAMENT	2-3
2009 SENIOR TOURNAMENT	4
NEW BOARD MEMBERS	4
USBC NEWS	5

Louisiana Lagniappe

2011 CHAMPIONSHIP TOURNAMENT

The 2011 Championship Tournament will be held at Lafayette Lanes in Lafayette, Louisiana. Tournament dates are: January 29-30, 2011; February 5-6, 12&13, 19-20 & 26-27, 2011.

Two team divisions will be offered. 4-member and 5-member. You may bowl each team event twice, however, your first team will count for all events. Not more than three members on a five member team can bowl together on a second team and place in the prize list. Not more than 2 members on a four member team can bowl together on a second team and place in the prize list. A member may enter the doubles & singles events twice, but with a different doubles partner. Your first team, doubles & singles will count for all events. All events may be entered once.

The tournament will have three doubles & singles squads on Saturday—8:00 am; 12:00 noon and 4:30 pm. If the 8:00 am squad is used, those lanes will be oiled between the 12:00 noon and 4:30 pm squads. If they are not used, the lanes will not be re-oiled. There will be two team squads on Sunday—9:00 am and 12:30 pm.

Doubles & Singles will be held on Saturday Only. Team will be held on Sunday Only.

Tournament Rule Changes:

The board of directors have implemented the following rules to the tournament, effective with the 2011 tournament:

1. USBC Rule 319a-2 10-pin rule will apply. When a bowler's 21 game or more average as of December 31, 2010 is 10 or more pins higher, that average (December 31, 2010) must be used.
2. USBC Rule 319c Average Adjustments (rerating) will not apply.
4. USBC Rule 319d Reporting Prior Prize Winnings will not apply.
5. USBC Rule 319e Average Adjustment for Entry will not apply.
6. Team squads will have 3 1/2 hours to bowl their event including practice time. Doubles & Singles squads will have 4 hours to bowl their event including practice time. Lane monitors will be watching the lanes to make sure everyone is up to bowl when it is their turn. Other than mechanical or medical issues, bowlers must be off their lanes by the allocated times. Squad announcements will be 5-10 minutes prior to the start of the squad.
7. Tournament Handicap will be 100% with a base of 220.
8. No outside food or drink including alcoholic beverages may be brought into the center.
9. Entrants are expected to wear suitable attire.
10. Entry fees will be \$23.00 per event. Optional handicap all events will be \$2.00 and optional scratch all events will be \$7.00.

A copy of the entry form is attached. Entry forms will be sent to local associations after August 1, 2010. They will also be posted on our website: www.Louisianausbcwba.com. Entry forms will also be mailed or emailed to team captains.



Louisiana Lagniappe

2010 SENIOR TOURNAMENT

The 2010 LA State USBC WBA Senior Tournament will be held on October 23-24, 2010 at Charlie's Lanes in Morgan City.

Entry closing date will be October 13, 2010. Entry fee will be \$24.00 per event plus \$4.00 for optional all events for a total of \$52.00.

Two new divisions have been added to the tournament. Divisions are as follows:

CLASS "A" (Division 1) Super Seniors 75 and Over

CLASS "B" (Division 2) 70-74

CLASS "C" (Division 3) 65-69

CLASS "D" (Division 4) 60-64

CLASS "E" (Division 5) 55-59

CLASS "F" (Division 6) 50-54

Division 6—Class "F" does not qualify for the National Senior Tournament.

A copy of the entry form is attached. Entry forms will be sent to local associations after August 1, 2010. They will also be posted on our website: www.Louisianausbcwba.com. Entry forms will also be mailed or emailed to team

QUESTIONS & ANSWERS

1. Is it considered a foul when a bowler crosses the foul line without releasing the ball?
ANSWER: No - it is not a foul as long as the bowler has possession of their ball.
2. If more than one bowler of the same team bowls on the wrong lane, what should be done?
ANSWER: All deliveries stand as bowled and bowlers shall complete subsequent frames on the correct lanes. According to Rule 9, if more than one player on the same team bowls on the wrong lane in turn, all deliveries stand as bowled. Upon discovery, bowlers shall complete subsequent frames on the correct lanes.
3. One of my leagues adopted 90% of 200 for handicap in the league rules. After the first ten weeks of bowling, the league secretary discovered the computer program being used by the league was using 80% of 200. How far back can the secretary go in correcting the league records?
ANSWER: The secretary can go back and correct the handicap for any league sessions that took place within the past 15 days. Since a league rule was violated, the league may only go back fifteen days to make corrections. Upon discovery, bowlers shall complete subsequent frames on the correct lanes.
4. One of my leagues discovered after a position round that we bowled the wrong opponents. The next week we pointed out to our league secretary the league bowled the wrong schedule. What should the league secretary do?
ANSWER: The secretary must allow the games to stand as bowled. In accordance with Rule 120, the games stand as bowled and are entered in the record for games won or lost as well as for individual averages. The league would simply continue with the regular schedule after discovering the error. Comparing scores with the proper opponents changes the competitive circumstances under which the match was bowled and is not permitted.
5. The tournament rules require bowlers to use their highest average from the previous season. A bowler has an established previous season left-handed average of 150 and a 175 right-handed average. She plans to bowl with her left hand in the tournament. Which average would she use?
ANSWER: The tournament rules require all bowlers to use their highest average. Therefore, she would have to use her 175 average, regardless of whether she bowled with her right or left hand. USBC Rule 319a, page 87.